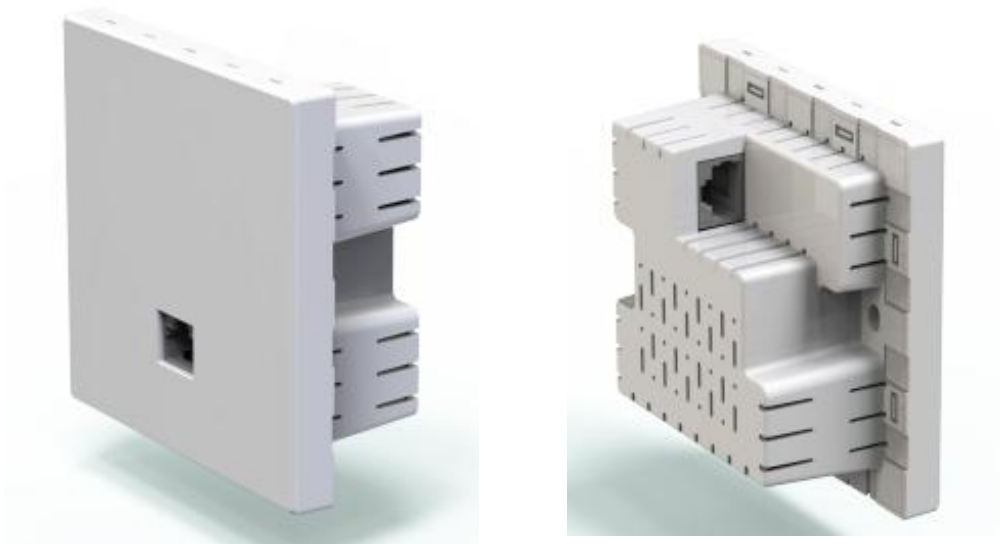

Product Datasheet

MAP3000GE

3000M dual-frequency gigabit wireless suction top suction AP



1、PRODUCT OVERVIEW AND FEATURES

Product overview:

MAP3000GE is a dual-frequency gigabit 3000M panel AP, providing 2.4&5.8GHz wireless signal transmission in two different frequency bands, dual-band intelligent switching, easy and seamless roaming, can cope with the high quality network requirements of various complex scenes, is very suitable for star hotels, hotels, enterprises, enterprises, schools, dormitories, businesses and other room intensive places.

Product features:

The new generation of Wi-Fi 6 wireless technology, stronger performance, better experience

New OFDMA, MU-MIMO and other wireless technologies, product performance is stronger, better user experience.

Type 86 panel design, PoE power supply, convenient construction, simple management, maintenance worry

National standard type 86 panel design, can directly replace the original network panel, without rewiring, do not destroy the original wiring. Support the standard PoE network cable power supply, each AP only needs one network cable, is not constrained by the power access conditions, the construction is convenient.

Automatic selection of the appropriate channel, with a smooth and stable network

According to the wireless channel usage in the AP environment, the appropriate channel

is automatically selected to avoid interference at the same frequency, and ensure wireless stability.

Different sizes of wireless networks can be efficiently managed

Fat AP mode (suitable for small-area wireless coverage): No need to use a wireless controller, the AP can work independently, and the cost is low;

Fit AP mode (suitable for large-area wireless coverage): It needs to be used with a wireless controller. The AP in the network can be managed uniformly through the AC, reducing the difficulty of wireless management.

Support intelligent roaming to improve the terminal experience

Using intelligent roaming technology based on the 802.11kvr protocol, in multi-AP scenarios such as hotels, apartments, dormitories, villas, etc., it helps mobile phones, Pads, computers and other terminal devices automatically access the AP with the best signal quality, effectively improving each user's Usage experience and overall performance of the wireless network.

2、 TECHNICAL SPECIFICATION

Hardware

Specifications

CPU	MT7981BA+7976CN+EN8801	CPU Dual-core 1.3GHz
-----	------------------------	----------------------

Memory	Flash: 16MB
--------	-------------

	DDR: 256MB
--	------------

Cable standard	IEEE802.3, IEEE802.3u, IEEE802.3ab
Ethernet interface	2×10/100/1000Mbps rate-adaptive WAN / LAN adaptive ports
Antenna	built-in 2.4G*2;5.8G*3
Button	1×Reset Button
Power supply method	POE 48V
Panel indicator light	2×Network port indicator light
Dimension (L*W*H)	86*86*40mm
Net /Gross Weight	<0.2kg / <0.25kg

Software

Specifications

MESH networking	Support
Micro AC function	Support (when there is no AC in the network, AP can be set to micro AC, and you can view and manage all AP in the network)
SSID number	4 (2.4GHz) +4 (5GHz)
Wireless encryption	Support for encryption / no encryption / hiding
User isolation	Terminal isolation
Wireless MAC address filtering	Support for black and white lists
VLAN setting	Support
Emission power setting	Support

Frequency width setting	Support
Channel setting	Support (support for automatic optimization of the best channel)
Limited number of wireless clients	Support
Device management	WEB management in Chinese and English
System log	Support
Factory reset	Support
Backup configuration	Support
Import configuration	Support
Software upgrading	Support
Network Tomography	Support

Wireless

Specifications

Wireless standards	IEEE 802.11b/g/n/a/ac/ax
Wireless rate	2.4G : 574Mbps、5G : 2402Mbps
Wireless band	2.4GHz & 5.8GHz
Wireless encryption	WPA-PSK, WPA2-PSK, WPA-PSK/WPA2-PSK

Other

Specifications

application

Operating temperature: -10°C ~55°C

environment

Working humidity: 10% ~ 90% RH has no condensation

Storage temperature: -40°C ~80°C

Storage humidity: 5% ~ 90% RH without condensation

3、CONTACT US



Tel: 0086-752-3397806

WeChat: HZGWS--PoE

Email: h zgws@h zgws.com

Skype: [h zgws@h zgws.com](https://www.skype.com/people/hzgws@h zgws.com)

Website: www.hzgws.com



Address: Building 3, Phase II, Xinghe Artificial Intelligence Industrial Park, No.333 Zhongkai 6th Road,
Chenjiang Street, Zhongkai High-tech Zone, Huizhou