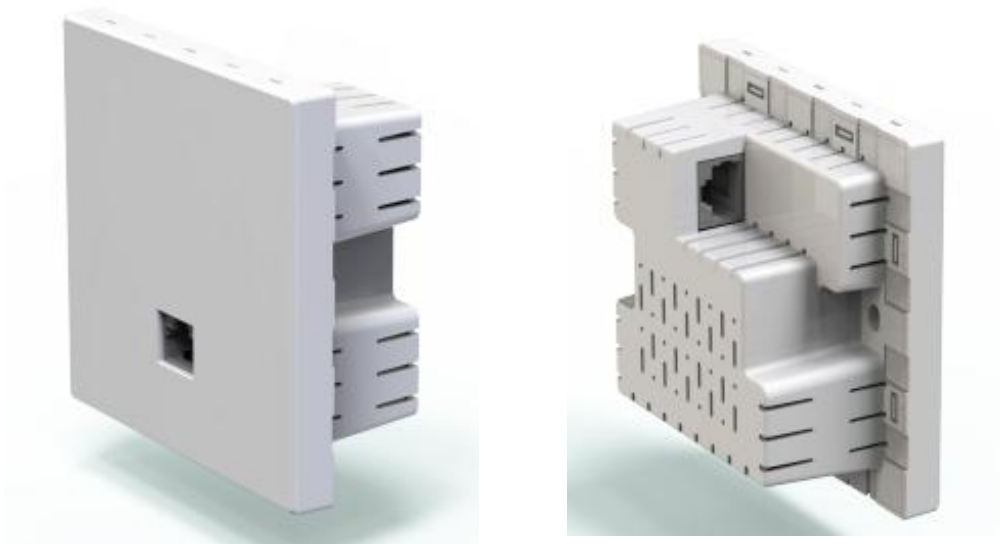

Product Datasheet

MAP1500GE

1500M dual-frequency gigabit wireless suction top suction AP



1、PRODUCT OVERVIEW AND FEATURES

Product overview:

MAP1500GE is a dual-band Gigabit 1500M in-wall AP that provides wireless signal transmission in two different frequency bands of 2.4&5.8GHz. It has dual-band intelligent switching, easy and seamless roaming, and can cope with high-quality network requirements in various complex scenarios. It is very suitable for high-density rooms such as star hotels, guesthouses, enterprises, schools, dormitories, merchants and other places.

Product features:

The new generation of Wi-Fi 6 wireless technology, stronger performance, better experience

New OFDMA, MU-MIMO and other wireless technologies, product performance is stronger, better user experience.

Type 86 panel design, PoE power supply, convenient construction, simple management, maintenance worry

National standard type 86 panel design, can directly replace the original network panel, without rewiring, do not destroy the original wiring. Support the standard PoE network cable power supply, each AP only needs one network cable, is not constrained by the power access conditions, the construction is convenient.

Automatic selection of the appropriate channel, with a smooth and stable network

According to the wireless channel usage in the AP environment, the appropriate channel is automatically selected to avoid interference at the same frequency, and ensure wireless stability.

Different sizes of wireless networks can be efficiently managed

Fat AP mode (suitable for small-area wireless coverage): No need to use a wireless controller, the AP can work independently, and the cost is low;

Fit AP mode (suitable for large-area wireless coverage): It needs to be used with a wireless controller. The AP in the network can be managed uniformly through the AC, reducing the difficulty of wireless management.

Support intelligent roaming to improve the terminal experience

Using intelligent roaming technology based on the 802.11kvr protocol, in multi-AP scenarios such as hotels, apartments, dormitories, villas, etc., it helps mobile phones, Pads, computers and other terminal devices automatically access the AP with the best signal quality, effectively improving each user's Usage experience and overall performance of the wireless network.

2、 TECHNICAL SPECIFICATION

Hardware

Specifications

CPU	RTL8197FH+RTL8832BR+RTL8367RB Dual-core center processor
-----	--

FLASH	16MB
-------	------

DDR	128MB
-----	-------

Cable standard	IEEE802.3, IEEE802.3u, IEEE802.3ab
----------------	------------------------------------

Ethernet interface	10/100/1000Mbps LAN port*1 support PoE 48V
--------------------	--

	10/100/1000Mbps LAN port*1
--	----------------------------

Antenna	2.4GHz: 3dbi built-in omnidirectional antenna*2
---------	---

	5.8GHz: 5dbi built-in omnidirectional antenna*2
--	---

Button	Reset Button *1
--------	-----------------

Power supply method	PoE 48V
---------------------	---------

Panel indicator light	WIFI
-----------------------	------

Software

Specifications

MESH networking	Support
-----------------	---------

SSID number	1 (2.4GHz) +1 (5GHz)
-------------	----------------------

Wireless encryption	Support for encryption / no encryption / hiding
---------------------	---

User isolation	Terminal isolation
----------------	--------------------

Wireless MAC address filtering	Support for black and white lists
--------------------------------	-----------------------------------

VLAN setting	Support
--------------	---------

Emission power setting	Support
------------------------	---------

Frequency width setting	Support
-------------------------	---------

Channel setting	Support (support for automatic optimization of the best channel)
-----------------	--

Limited number of wireless clients	Support
------------------------------------	---------

Device management	WEB management in Chinese and English
-------------------	---------------------------------------

System log	Support
------------	---------

Factory reset	Support
---------------	---------

Backup configuration	Support
----------------------	---------

Import configuration	Support
----------------------	---------

Software upgrading	Support
--------------------	---------

Network Tomography	Support
--------------------	---------

Wireless

Specifications

Wireless standards	IEEE 802.11a/b/g/n/ac/ax
--------------------	--------------------------

Wireless rate 2.4GHz & 5.8GHz: 2.4GHz:574Mbps, 5.8GHz:1201Mbps

Wireless encryption WPA-PSK, WPA2-PSK, WPA-PSK/WPA2-PSK

Other Specifications

application Operating temperature: -10°C ~55°C

environment

Working humidity: 10% ~ 90% RH has no condensation

Storage temperature: -40°C ~80°C

Storage humidity: 5% ~ 90% RH without condensation

Dimension (L*W*H) 86*86*40mm

Net /Gross Weight <0.2kg / <0.25kg

3、CONTACT US



Tel: 0086-752-3397806

WeChat: HZGWS--PoE

Email: hzgws@hzgws.com

Skype: [hzgws@hzgws.com](https://www.skype.com/people/hzgws@hzgws.com)

Website: www.hzgws.com



Address: Building 3, Phase II, Xinghe Artificial Intelligence Industrial Park, No.333 Zhongkai 6th Road,
Chenjiang Street, Zhongkai High-tech Zone, Huizhou